

Z1901 12" X 12" A.R.E. SANI-FLOR RECEPTOR WITH 8" SUMP DEPTH

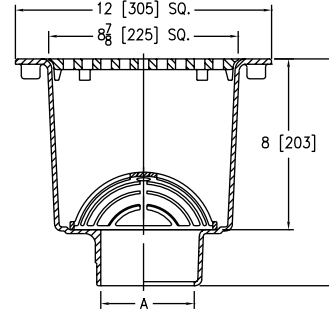


ENGINEERING SPECIFICATION

Zurn Z1901 Sani-Flor receptor features 12" x 12" x 8" deep cast iron body, square, light-duty grate with 1/2" slotted openings, and white acid resisting porcelain enamel interior and top – complete with white ABS anti-splash interior bottom dome strainer.

NOTE

*Add 1/2" to 12" dimension when specifying ZN1901 or ZS1901.



Dimensions in inches [mm]			Approximate Weight lb [kg]	Grate Open Area sq in [cm²]
A Pipe Size/ Outlet Type	E Body Height Dimensions			
	Z	ZN/ZS		
Inside Caulk (IC)				
3IC, 4IC	10-5/8 [270]	11-1/8 [283]	34 [15]	31 [200]
No-Hub (NH)				
2NH, 3NH, 4NH	10-5/8 [270]	11-1/8 [283]	34 [15]	31 [200]
Neo-Loc (NL)				
2NL, 3NL, 4NL	10 [254]	10-1/2 [267]	34 [15]	31 [200]

PREFIXES	DESCRIPTION	A PIPE SIZE	Z (A.R.E.)	ZN (N.B.)	ZS
Z1901*	Cast Iron Body with White A.R.E. Interior and Top	2", 3", 4"	2,221.00	-	-
ZN1901†	Cast Iron Body with White A.R.E. Interior and Top, 12-1/2" Square N.B. Frame and Full Grate with 1/2" Square Openings	2", 3", 4"	-	2,966.00	-
ZS1901†	Cast Iron Body with White A.R.E. Interior and Top, 12-1/2" Square Stainless Steel Frame and Full Grate with 1/2" Square Openings	2", 3", 4"	-	-	4,436.00

OUTLETS (SPECIFY PIPE SIZE IN INCHES AND TYPE OF OUTLET)					
OUTLET TYPE	PIPE SIZE/OUTLET TYPE				ADD
IC	Inside Caulk	3IC, 4IC	N/C	N/C	N/C
NH	No-Hub	2NH, 3NH, 4NH	N/C	N/C	N/C
NL	Neo-Loc	2NL, 3NL, 4NL	N/C	N/C	N/C

SUFFIXES		Z (A.R.E.)	ZN (N.B.)	ZS
-DX	Dex-O-Tex Flange (ZN Only)	N/A	1,143.00	N/A
-HD	Stainless Steel Frame with Extra-Heavy-Duty Stainless Steel Grate (ZS Only)	N/A	N/A	1,199.00
-HP	Heel-Proof Grate (ZN Only)	N/A	696.00	N/A
-K	Anchor Flange	385.00	385.00	385.00
-KC	Anchor Flange with Seepage Holes and Clamp Collar	580.00	580.00	580.00
-P	1/2" Trap Primer Connection (See Z1023)	194.00	194.00	194.00
-TC	Neo-Loc Test Cap Gasket (2", 3", 4" NL Bottom Outlet Only)	24.00	24.00	24.00
-VPS	Vandal-Proof Strainer (NH outlet only)	312.00	312.00	312.00
-2	1/2 Grate	N/C	N/C	N/C
-3	3/4 Grate	N/C	N/C	N/C
-4	Full Grate with Center Opening (2" Round for Z and 3-1/32" Square for ZN or ZS)	178.00	178.00	178.00
-6	Grate with 6" Dia. x 6" High Funnel	488.00	626.00	1,555.00
-8	Grate with 8-7/8" x 3-5/8" x 3-3/4" High Oval Funnel	531.00	883.00	2,424.00
-11	Vandal-Proof Secured Grate (ZN and ZS Only)	N/A	79.00	79.00
-15	Solid Loose Set Cover (Z and ZN Only)	116.00	228.00	N/A
-19	Full Hinged Grate (ZN Only)	N/A	351.00	N/A
-23	Aluminum Bucket	318.00	318.00	318.00
-25	White A.R.C. Bucket	597.00	597.00	597.00
-31	Stainless Steel Mesh Liner for Bucket	472.00	472.00	472.00
-32	Aluminum Dome Strainer	N/C	N/C	N/C
-33	White A.R.C. Anti-Splash Bottom Dome Strainer	343.00	343.00	343.00

		DEDUCT		
		Z (A.R.E.)	ZN (N.B.)	ZS
-LD	Less Bottom Dome Strainer	- 61.00	- 61.00	- 61.00
-1	Less Grate	- 228.00	- 489.00	- 1,230.00

BEST SELLERS		LIST PRICE
Z1901-2NH-2		2,221.00
Z1901-2NH-2-32		2,221.00
Z1901-3NH		2,221.00
Z1901-3NH-2		2,221.00
Z1901-3NH-2-25		2,818.00
ZN1901-3NH-2		2,966.00
ZN1901-3NH-2-33-KC		3,889.00
Z1901-3NL		2,221.00
Z1901-3NL-2-32		2,221.00
ZN1901-3NL-2		2,966.00
Z1901-4NH-2		2,221.00
ZN1901-4NH-2		2,966.00
Z1901-4NL		2,221.00
Z1901-4NL-2		2,221.00
ZN1901-4NL-2		2,966.00

Supplied By:



877-903-7246

www.commercialplumbingsupply.com

*Regularly furnished unless otherwise specified.

Items designated as Best Sellers are most specified and are generally in stock for shipment.

⌚ This symbol denotes a product that is engineered to reduce installation and rework time.

For additional product information, please visit www.zurn.com